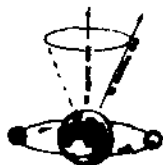


ADVANCED SCIENCES
RESEARCH and DEVELOPMENT CORPORATION, Inc.



E L O P T I C D I R E C T O R Y

By: DR. T. GALEN HIERONYMUS ©

Edited By: DR. SARAH E. HIERONYMUS

NOTE:
THIS IS EXPERIMENTAL AND NOT TO BE
USED INSTEAD OF A PROVEN MODALITY
A.S.R. & D. CORP.

HISTORY OF ELOPTIC ENERGY DETECTION

Development in an instrumented form dates from the basic discoveries of Dr. Albert Abrams of San Francisco just after the turn of the century. We owe these discoveries to a most unusual and fortunate combination of circumstances: First, Abrams had had an exceptional medical training. After qualifying to receive a medical diploma in California before he was old enough, he learned German and graduated in medicine with the highest possible honors from Heidelberg University. Second, he had inherited great wealth and could afford to spend a long time doing post-graduate work in Heidelberg, Berlin, Paris, Vienna, and London, under the foremost researchers of the day. Later, his wealth allowed him to finance his own researches and contemptuously ignore those who accused him of using his discoveries to make money. Third, he became a pupil and later the friend of Hermann L. von Helmholtz, one of the great scientific figures of the time, who aroused his interest in the burgeoning science of physics. This stimulated him to try to correlate the laws of biology with the laws of physics. Last - and perhaps most important - Abrams by nature was an exceptionally perceptive and persistent observer. Little escaped his trained observation and he counted no effort too great in trying to find the cause of some phenomenon he had noticed.

In 1910, while examining a patient with a cancerous ulcer on his lip, Abrams detected a small area of the abdomen which yielded a dull note under percussion with his fingers. After further tests he made the remarkable discovery that the dull note could only be detected when the patient was facing West. This suggested that he was dealing with a phenomenon, perhaps of an "electronic" nature which was influenced by the Earth's magnetic field.

This led the ever-ingenuous Abrams to connect his patient with a wire to a healthy young man, and he made the further discovery that the cancerous "emanations" from the patient induced a dull note in the same area in the young man's abdomen. Later he found that the presence of the patient was unnecessary - a sample of his blood was sufficient to induce a reflex action in the abdominal muscles and to produce a dull note.

Convinced by now that he was on the track of something important which might help him to correlate the laws of biology and medicine, he made test after test, using patients who were suffering from a variety of diseases. He found that each disease yielded a dull note in one specific area of the abdomen; and he thought that he had found a new tool for diagnosis until he observed that samples from syphilitic patients yielded dull notes in the same area as a sample from cancerous patients.

Undaunted - and believing that the "emanations" from diseased blood were electronic - he introduced a variable resistance box into the circuit. By varying the resistance, he found he could "tune out" different diseases and could assign to each a value of ohms. He names his discovery "the electronic reactions of Abrams" or "E.R.A." and had one of the finest instrument makers of those days make most accurate resistance-boxes. For many years these were used by Abrams and his pupils in the diagnosis of disease.

Some of his pupils found the art of percussing the surface of the abdomen difficult to acquire. For them Abrams found an alternative method: stroking the surface of the abdomen with a glass rod. When the emanations produced a reflex in the muscles under the skin, the rod would encounter resistance and the skin would tend to pucker.

Early in his experiments it occurred to Abrams to try to find the effects of well-known antidotes for certain diseases. When, for example, he put a sample of quinine into his apparatus along with a specimen of malarial blood, he made

another basic discovery; the radiations from the quinine neutralized the radiations from the malarial blood and eliminated the dull note. This led him to apply E.R.A. to the treatment of disease. With the aid of one of the foremost radio experts of the time, Abrams devised an instrument he called the "oscilloclast." This was connected to the patient by a wire and electrode and produced intermittent negative potentials and radio frequencies. In circuit was a resistance-box tuned to the value in ohms of the specific for the disease, which he had determined with his diagnostic instrument. Abrams and his pupils had great success in treating patients with the oscilloclast and the instrument was in use for many years.

With tireless energy, Abrams worked on his discoveries up to the night before his sudden death in 1924. He made many discoveries, the significance of which have yet to be fully explored. But, despite vast expenditures of time and money, he was never able to find an effective substitute for the human mind and body as a detector. Though substitutes for the abdomen have been found and are in use today, in every case the human mind and nervous system are essential.

Fortunately, imaginative doctors from all over the world came to San Francisco to take post graduate courses in E.R.A. Thus, Abrams' influence extended far beyond his own clinic and others were inspired to follow in his footsteps. Some of them have made great contributions to the development of what has come to be called radionics. But the present science owes its origin to the basic discoveries described above, which might never have been made but for the exceptionally perceptive genius of Albert Abrams.

Most of the medical doctors who had taken Abrams' courses were so successful in diagnosis and treatment and so busy with grateful patients that they had little time or inclination to do much research. But the publicity given to the "Electronic reactions of Abrams" had excited the interest of imaginative people outside the medical

profession and had encouraged them to experiment for themselves.

Radionics owes its next great impetus to a pioneer of radio, Thomas Galen Hieronymus, formerly of Kansas City, who produced some ingenious instruments which used vacuum tubes for "amplification" and condensers, instead of resistances, for "tuning". To Hieronymus belongs the honor of being awarded one of the most unusual patents ever granted by the United States Patent Office. This patent - No. 2,482, 773 granted in 1949 - describes an instrument for the 'detection of emanations from materials and measurement of the volumes thereof.' This included a radio-frequency amplifier, variable condensers, and a noninductive resistance. But the heart of it was a prism thru which the emanations passed. As a detector, it used a rubbing-plate, which, by this time, many were using instead of a human abdomen. When the plate is stroked, the fingers encounter tactile resistance or "a stick" when the emanation is tuned in.

RADIONICS: A Science for the New Age

by Edward W. Russell



Dr. Albert Abrams

From a photograph taken
in 1923

B I B L I O G R A P H Y

ELOPTIC MEDICAL DIRECTORY

BY: DR. T. GALEN HIERONYMUS

COPYRIGHTED 1976

Various "Negative Energy" Rates, furnished to us by our Research Associate, "Laurence Blake", from his Research Notes.

Various Notebooks, containing notes as to Research procedures and methods of applying, belonging to Dr. T. Galen Hieronymus, from his Research between the years 1952-1972.

EXCERPT FROM: Report on Radionics: A Science For The Future. Edward W. Russell

BOOK LIST

Gray's Anatomy

Merck's Manual

Merck & Co. Publications Dept.
P.O. Box 2000
Rahway, N.J. 07065

Dr. Dousbach Tells You, Booklets,
published by:

The International Institute
of Natural Health Services, Inc
7422 Mount Joy Drive
Huntington Beach, CA 92648
Phone (714) - 848-0774

The Pill Book
Bantam Books

Silverman and Simon
Bantam Books

Prevention Magazine

Rodale

Health Magazine

Health Magazine
P.O. Box 3600
Bergenfield, N.J. 07621

ELOPTIC ENERGY INSTRUMENTS

At present, there are three different Eloptic Energy Instruments produced by Advanced Sciences Research and Development Corp. They are, (a) The Analyzer, (b) the Rate Treatment Instrument, and (c) The ELOPTIC Beam Projector.

The (a) Analyzer can be used as an analyzer and as a treatment instrument.

The (b) Rate treatment instrument is for treating on a specific rate.

The (c) Beam Projector is for treating with a specimen and a Reagent.

The Analyzer is equipped with two Rate Dials. The Left hand dial is referred to as the Conditional Dial and the Right hand dial as the Location Dial.

The Rate system is divided into two systems, the Double Dial and the Single Dial Systems. In the Double Dial system, both dials are used as shown on the Analysis Chart where 9 - 49 is the double dial rate for General Vitality, 2 - 76 is the Double Dial rate for the Heart, 92 - 83 is for the Lungs, etc.

Refer to the second page in the Alphabetical list. The Appendix is shown as 3 - 8 for the double dial rate and -66 for the single dial location.

NOTE: When a number is shown as -66, it means the right hand dial. When it is shown as 60-, it means the left hand dial. Think of the (-) as the middle of a double dial rate, e.g. 2 - 76. The (2-) is on the left, and the (-76) is on the right.

S P E C I M E N S

I. FOR USE AS SPECIMEN, (PEOPLE OR ANIMALS)

- A. Handle Q-Tips cautiously with Kleenex, or wear gloves. Have subject take Q-tips in hand, stick both ends in mouth, dampen with saliva, break Q-tip in half, put both ends in test tube. Do not cork tube until saliva is completely dry. There is the danger that the Q-tip will mildew. A mildewed specimen must not be used.

A specimen works the same way for animals. Dampen the Q-tip in the animals mouth. Break, and put both ends in the testube.

II. PICTURES

- A. Polaroid snapshots are very good for use as specimens. The background should be plain without inclusion of walls, furniture, trees, bushes, etc. If the background is busy with many inclusions, trim the subject out of the snapshot, taking care to cut both sides of the paper, and leave them attached to each other. If you are using another type of picture, be certain that the negative has not been destroyed.

Aerial photos must be used to treat or analyze conditions of any large amount of area, such as a grove, orchard or farm, or forest.

III. BE CAREFUL NOT TO CONTAMINATE YOUR SPECIMENS

- A. ALWAYS HANDLE SPECIMENS VERY CAREFULLY. PICK THEM UP WITH KLEENEX IN HAND TO COVER PORTION OF SPECIMEN YOU TOUCH, OR WEAR GLOVES. A PICTURE MAY BE CUT WITH A TAB ON THE SIDE TO HANDLE WITH. A TEST TUBE SHOULD HAVE A LONG TAB, OR BE HANDLED WITH FORCEPS (TWEEZERS).

A-10

THE TACTILE SENSOR PLATE

On the portable Hieronymus Instrument, the Tactile Sensor Plate is located on the lower right-hand side of the panel. It is black, lustrous and very smooth.

Place your right hand on the plate as in diagram 3. Tips of fingers should be resting on the plate, as well as the upper part of your palm. Move your hand in a circular, clockwise motion. Perhaps if you sprinkle a little bit of talcum powder on a smooth surface, then place your right hand on the board and powder, your hand will slide more smoothly. After putting the powder on your fingers and upper palm, wipe both hands together, so that powder remains on your right hand, but does not smear the plate.

Make a saliva specimen of yourself, or use a picture of yourself. Put the specimen in the well. Set the left hand dial at 9-. Set your right hand dial at -49. This is the rate for general vitality. Look at the Intensity dial. Put your forefinger of your left hand beside the knob (by the pointer on the Intensity dial.) Move your finger to the right, slowly pushing the knob around the dial. Move your right hand (fingers and upper palm) around the Tactile Sensor Plate, slowly, at the same time you are moving the Intensity Knob to the right around the Intensity Dial. When you feel the "stick" with your right hand on the Plate, stop moving the Intensity Dial.

Note the figure on the Intensity Dial, then move it slowly back to the left, and count the turns until the pointer is back on 0. Record the figure, or value.

EXAMPLE: 9-49 335

It has been noted that in years past, the readings of such intensities were lower than they are today. We have found that with the incidence of the rise of energies in the air, such as radiation from the bombs exploded in the upper atmosphere, the T.V. and radio

energies, Radar, Microwave, etc. the readings have increased in value.

Practice is the keynote of becoming a good operator of this instrument. Please do not intentionally affect the instrument with your mind. This is not a psychic generator. It is an accurate, efficient analyzer and treatment unit.

Look at the Panel of your Instrument. Locate the Neutralizer Switch. Use this switch to neutralize the well after you have finished working with the specimen. If you neutralize your specimen, inadvertently, throw it away, if it is a Q-Tip saliva specimen. If it is a photo or snapshot, lay it aside for a few days, then check the 9-49 again, to see if it is recovering it's vitality. If it has not, it will be of no further use for analyzing or treating.

The well should be neutralized after every use of the Analyzer, after you have removed the specimen.

REAGENTS

The rates in this book are sufficient for any work you will need to do in practice and experimentation. Treating on the rate is a very good method of getting the results you need to accomplish, by treating out negative conditions.

We have found that some substances we can use in the well with the specimen while treating, will hasten the results we desire.

Put into test tubes the substances and cork them. These substances may be herbs, prescription drug samples, common kitchen remedies, such as grapefruit, fresh orange juice, vitamins, food supplements, etc.

Always test the Reagent against the specimen's 9-49. If it lowers the 9-49 in any given circumstances, it is contra-indicated. If it raises the value of the 9-49 of the specimen, it is indicated. If it lowers the intensity of the negative condition (left hand dial) and raises the intensity of the specimen, then it is indicated.

If you can find a Reagent which raises the vitality 9-49 of the specimen and lowers the intensity value of the condition you wish to eliminate, then it is indicated. For example, 3-37, or pneumonia in the bronchial areas, intensity 347,: The Reagent in the well with the specimen should lower the value of the 3-37 to 0 or a very low intensity reading.

When you collect Reagents, the ones you find of value should be numbered. We suggest the number be put on top of the Cork.

Keep a numerical list in a notebook, and an alphabetical list, for finding those you need in a hurry.

TREATMENT PROCEDURES

Note: Extensive observation and experimentation has shown that degenerative diseases conditions like fistula, cancer, TB, Lupus, Emphysema has causes behind causes, behind causes. Experience has shown that the order of treatment best follows the regime and order listed:

1. Remove immediate infection--staph, strep, virus'
2. Check for and remove systematic poisons, such as: a. metallics, b. DDT and related c. industrial poisons, d. environmental poisons (from air and water), e. drugs, f. parasites, g. radiation administered as a treatment.
3. When all poisons and infections are eliminated:
 - a. remove inflammation (55-) in location (T on 55-X)
 - b. remove congestion (40-) in location (T on 40-X)
 - c. Check HCl (burn) levels and treat accordingly.
4. Pay particular attention to and treat system in which problem is located.
 - a. Digestive system is from mouth to rectum.
 - b. Circulatory system includes all elimination (lungs, Liver, Spleen, heart, skin, kidneys, etc.)
5. Patient is best treated from controlled location (such as hospital, nursing home, etc.) where they can be physiologically monitored.
6. Strict attention should be paid to diet, water purity (test) sugar levels, and balances.
7. Check hypo (77-) and hyper (22-) of various organs and systems-- If they will keep centered, progress to step 8. If not, re-check for poisons, metallics, drugs, etc.

A-14

8. After all these and check and recheck, re-building and regeneration of organs and functions can start to take place. Remember this condition was not caused overnight.
9. Because of the possibility of Karmic conditions and due to the degenerative nature of such diseases, it is absolutely necessary to work in complete cooperation with the patient, doctors (if possible) and the patient's family.
10. If and when hangups in treatment occur, refer to special supplements on:
 - a. Environmental poisons and drugs
 - b. Implant mechanisms
 - c. Dark forces and Killer psychic forces (Star War Rates)

LAST BUT NOT LEAST REMEMBER:

1. This condition probably required many months and or years to progress to where it is and will require time to do properly.
2. Keep going for the cause behind the cause behind the cause, etc.

TREATMENT PROCEDURES

When you have determined what to treat, and the rates on which to treat, place the specimen in the well with the dials set on the pre-determined rates. If you wish to use a ReAgent, place that in the well with the specimen, after checking to see if the ReAgent will lower the reading to 0 or very near 0. ReAgents sometimes may be combined to obtain the desired result of 0 reading for the negative condition in any given location.

When determination is made as to treatment, turn on the power switch, for the treatment. Then check the condition in the given location every ten minutes. Ascertain if the condition is diminishing in intensity. If it is not, then it is necessary then to determine if there is any "holding energy". Check your specimen for 29-, 5-, 4-, 2-, 97-, 46-, 3- (on the left hand dial). If any of these are found, it is necessary that they be treated out before you proceed with treating out the original condition, you began treating.

WARNING: This instrument is built to be powerful. Be certain to check the intensity of the condition for which you have set the dials, every 20 minutes at least. There is no need for treating further at this time if the condition has been reduced to 0. In treating some negative conditions, it is necessary to check the specimen for the condition daily for several days. Sometimes you will find a condition may have arisen again, tho at a lower intensity value. Treat it out again, and also look for any "holding energy" values that may still be there. If these are present treat them out again. You will find that this treatment may be compared to peeling an onion. It is necessary, as Dr. T. Galen Hieronymus has taught us, to find

"the Cause behind the Cause behind the Cause".

When you are learning to operate the instrument, it is necessary to be patient and persevering. Never release your interest in eliminating any given condition until you have obtained the results you desire.

If it is difficult and time consuming to look through many rates for the answers you need, we suggest "scanning the location" to find the conditions with the greatest intensity values. These are the key to the elimination of the condition. Without the location, you may "scan" the Condition (with the left hand dial set on the condition) to find the location. You will find a lot of "junk" conditions, but treatment on the high intensity conditions will eliminate most of these "junk" conditions.

Keep your mind clear, and your interest keen while you are working with the instrument.

TREATMENT NOTES

1. Water is the greatest absorbent agent we have to work with. If you have contaminated your specimen in the test tube with hot, sweaty hands, hold the test tube with forceps (tweezers) under the faucet and turn the water on. Let it run over the test tube for a minute or so. Carefully wipe dry with a paper towel or tissue, being careful not to touch the tube with your hands.
2. When you have run an analysis with the Eloptic Radiation Chart, look for the organs with the lowest intensity values. These are the ones to "scan" in order to find the cause of their low intensity emanations.
3. A high Pineal intensity reading and a low thymus indicates possibility of Cancer. Check the specimen for all cancer rates, and treat out immediately.
4. In cases of suspected cancer, check specimen on 38.5-7.5. If found, treat out. This rate for Asbestos is usually found with high readings of Cancer rates.
5. In cases of poison, check the stomach, -32. for poisons, kidneys -23, liver -29. Check the heart 2-76. If reading is low, treat poisons out of heart, when you check and treat other organs. 10-70 is a heart stimulant rate, which may be used (or treated on) as much as 20 minutes at a time.
6. When treating plants, always use a Reagent which raises the 9-49 of the plant, and lowers the 9-49 of the insect pest. Never use violent poisons to treat a plant which bears fruit or vegetables you will be using for food.

Often, one of the double dial numbers will be the same as the single dial rate, but not always. Most of the time, two single dial rates can be combined.

For example, combine a condition with a location, 60- is to be combined with -66 to make 60-66 which is 60- Streptococcus with -66 the Appendix.

In some cases, you will know where the trouble is located but you do not know the cause of the trouble. Take the case of trouble in the Appendix, set the location, -66 on the right hand dial and try such conditions as experience indicates such as 60- for Strep., 34- for Staphlococcus, or 16- for Aluminum Poisoning.

You may suspect the trouble to be Tobacco Poison, so you set the condition dial for 12- (Tobacco poison) and then set the right hand dial for first one location then another until you have found all the places where there is tobacco poison, e.g. - 12 mucous membranes, -74 lower lung, -93 upper lung.

Measuring the intensity. After setting the two rate dials, you will want to measure the intensity or the amount. Rotate the intensity dial as you try for a reaction on the reaction plate. Stop rotating the intensity dial as soon as you get a reaction on the plate. The amount indicated by the intensity dial is then written down.

SCANNING. Suppose you know the location but have not found the condition, with the location set, slowly rotate the other dial (condition dial) as you try for a reaction on the plate. When you get a reaction, stop and measure the amount or intensity, then continue to move slowly, note, SLOWLY, not too fast, rotate the condition dial until another reaction is indicated.

In this method, you will get many conditions that only show a low amount. Look for the high ones. Follow the same procedure then the condition is known but not the location.

7. When treating Diabetes (5-70) remember the cause. This could be heavy metallic poisons, (16-, 41-, 52-, or 80-.) Check -34 (Pancreas) for these before treating it for anything else. In cases of mental confusion, or aberrations, always check the pineal (16-28, and -28) for an intensity of heavy metallic poisons, or for a tumor in the -28 location.
8. Nickel poisoning (41-) is responsible for most cases of teeth loosening. It will be found in the Periosteum (covering of lower portion of teeth within the gum) and should be treated out immediately. (41-25).
9. Uremic poisoning may be found in the skin (-42) or in the subcutaneous tissue, in some cases of kidney infection, or diabetes. Treat out from time to time until you are able to remove the cause.
10. For impotence, treat 34-2, 60-2, 5-91, 6-87, 3-9, and 10-81.
11. To boost vitality, when adrenals are lower than 9-49, treat 3-9 for 15 to 20 minutes.

R E C O R D S

Be certain to keep complete records of all your work. Remember that what you are doing is experimental, and a part of the Research that must, needs to be done, in finding out all the properties of this new energy, which lies beyond the Electromagnetic Spectrum of this Planet, and is not as yet recognized by the orthodox scientific community. Nevertheless, it exists, and we believe it to be the Medical Aid of tomorrow.

Example of Record of Treatment:

June 10, 1983

10:00 AM

Specimen # 32

			<u>10:10 AM</u>	<u>10:25 AM</u>
9-49	312		320	345
3-74	241	<u>TREAT PLUS R213 #</u> <u>VIT. C on 68-37</u>	107	0
34-37	340		140	0
60-37	268		97	0
32-37	300		120	0
68-37	345		150	0

Estimate of conditions

Sore throat, Flu, Cold
in bronchial area.

Try Reagent No. 213

Vit. C

on Rate

68-37 = 0

9-49 Specimen

+ R #213 + Vit. C = 350

We recommend 8-column accounting pads for keeping records, and file folders, or 3-ring binders.

A-22

The ELOPTIC EMANATION ANALYSIS CHART

This Analysis Chart is the result of many hundreds of tests made on patients with varying kinds of illnesses and diseases.

A little over thirty organs and parts of the body and half a dozen conditions will be found on this chart. Naturally, there are many other parts of the body that can be analyzed but we have found, from experience, that running an analysis to begin with on those shown on the chart will give almost all of the information needed by the operator so that he can know where to look and what to look for to find the troubles to which the patient is subjected.

Relationships between the values shown for the various organs on the Analysis Chart of a particular patient will indicate certain things. For example, when one organ or gland is high and one low, it predisposes towards a certain physical alignment; when certain glands, more than one, are too high, it predisposes towards other conditions.

The operator, with experience, will soon learn how to observe these indicating trends from the visceral analysis and then he can go to the detailed checking of the pathology in the various locations. He can write these values, with the rate required, in the Pathology column as shown on the Analysis Chart.

